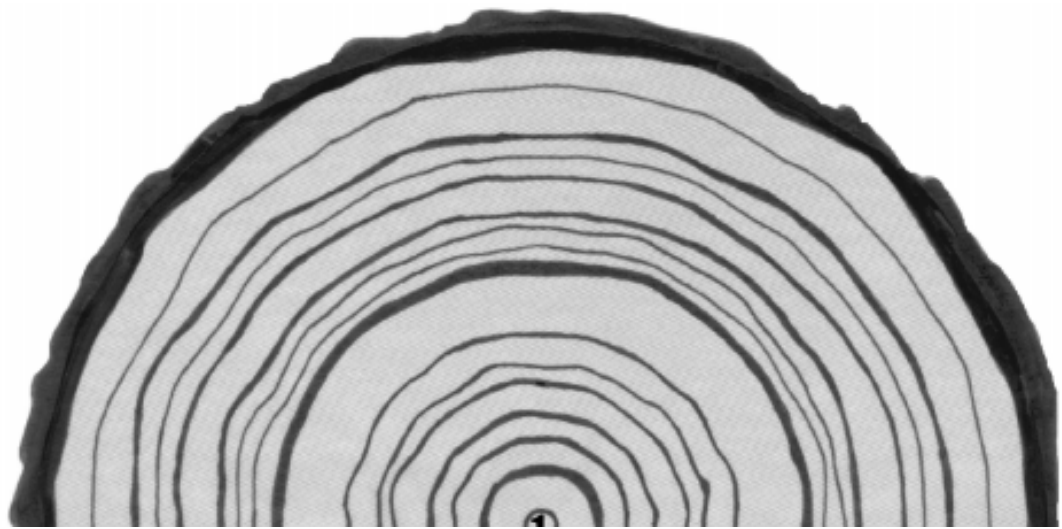


**Purpose:** To see how scientists learn about past (recent) climates from tree rings

**Instructions:** Complete the questions below using the diagram and the data provided.



1. This tree was cut down 3 years ago. What year was that? \_\_\_\_\_
2. What year did this tree first start growing (pith year)? \_\_\_\_\_
3. The last ring represents a full year. How old was this tree? \_\_\_\_\_
4. Which year was the wettest? \_\_\_\_\_ How do you know? \_\_\_\_\_  
\_\_\_\_\_
5. Which year was the driest? \_\_\_\_\_ How do you know? \_\_\_\_\_  
\_\_\_\_\_
6. Describe the year you were born based on inferences you can make from the tree rings above. \_\_\_\_\_  
\_\_\_\_\_  
\_\_\_\_\_
7. After the thickest ring there is a thick dark ring (part of the same year). Infer why that dark ring is thicker than the other dark rings. \_\_\_\_\_  
\_\_\_\_\_  
\_\_\_\_\_